



# Welcome to Kindergarten!

2012 – 2013

Eastern Carver County Schools

**Kindergarten Registration Manual**

## IMPORTANT DATES FOR 2012-13 KINDERGARTEN

### All-Day Kindergarten Tours

All-day Kindergarten is offered in six schools. Parents are invited to tour the schools during one of the following times. Attendance is not required for admittance into the all-day kindergarten program.

#### January 11

Bluff Creek Elementary	10 am or 2 pm
Chaska Elementary	9:30 am or 1:15 pm
Jonathan Elementary	10 am or 1:30 pm

#### January 12

Chanhassen Elementary	10 am or 2 pm
Kindergarten Center	10 am or 2 pm
Victoria Elementary	10 am or 2 pm

### La Academia Parent Information Meetings

Parents interested in learning more about La Academia, our pilot all-day kindergarten English/Spanish language program must attend one of the following meetings. Space is limited in La Academia and attendance is required for acceptance into the program. Meetings will be held at the Kindergarten Center.

January 16, 6 pm

January 17, 7:30 am

January 18, 1:30 pm

January 19, 6 pm

## OTHER IMPORTANT DATES

### February 1

Registration materials due to the Welcome Center. Families will be notified in late February of all-day and La Academia kindergarten assignments.

### April 20

Kindergarten Visitation Day at the Kindergarten Center

### September 4 & 5

Assessment days for new kindergarten students

### September 6

First day of school for kindergarten students

# Welcome to Kindergarten!

**Si quiere esta información en español, por favor llame al 612-282-4867.**

*Dear Parents/Guardians:*

*In just a few months, we'll be welcoming your child into one of our kindergarten classrooms! We know that your child comes to us with a unique set of talents and a singular personality. We truly value those unique qualities and we're eager to make your child's kindergarten year an exciting and positive learning experience.*

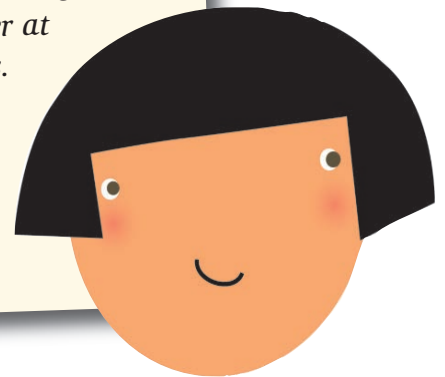
*This registration booklet is full of information about our Kindergarten Program as well as the forms we use to create permanent student records for your child. We invite you to read about our program and then complete the forms and return them to us by 4 p.m. on February 1.*

*You'll find all the information you need to register your child for half-day kindergarten at the Kindergarten Center located in Chaska. You will also find information about our All-day Kindergarten Programs offered at Bluff Creek Elementary, Chanhassen Elementary, Chaska Elementary, Jonathan Elementary, Victoria Elementary and at the Kindergarten Center. And, new this fall, we will offer La Academia, a dual language immersion program.*

*We're looking forward to meeting you and your child in April at our annual Kindergarten Visitation Day. Until then, please feel free to call 952-556-6400 with any questions or concerns you may have regarding our Kindergarten programs. Please call the Welcome Center at 952-556-6112 with questions about the registration process. We are happy to help in any way we can.*

*Sincerely,*

*Greg Lange, Principal, Kindergarten Center*



Visit Eastern Carver County Schools at [www.kc.district112.org](http://www.kc.district112.org) or on Facebook to view a video about kindergarten readiness!

# Welcome to Kindergarten!

## We love children and it shows!

Our award-winning Kindergarten Program offers an outstanding combination of curriculum and staff. Our Kindergarten Program gives each child the opportunity to discover and learn through participating, observing and experimenting—and they have fun doing it! Kindergarten provides exposure to concepts and skills in a wide range of curriculum areas. We introduce children to practical knowledge and skills and help them to analyze and evaluate the world by providing experiences that promote social, emotional, physical and intellectual growth.

### Kindergarten Readiness

Parents frequently ask us, “Is my child ready for kindergarten?” If your child meets the state age requirement — 5 years old on or before September 1 of the kindergarten year — we believe the answer is “yes.” Our teachers are skilled in working with students whatever their particular stage of development, no matter what their birthday. However, it is an important decision and we are happy to talk with parents who are considering holding their child back for a year.

### Preparing for Elementary Program

Kindergarten is just the beginning of a child’s journey into elementary school. Our District is implementing new initiatives to enhance our already strong elementary program. Responding to the input from parents and staff, the INSPIRE committee has made recommendations for the elementary program in four areas: to personalize instruction, challenge students at all levels, connect students to global and cultural awareness and to explore early formal second language learning opportunities.

### Safety is a Priority

All school employees wear an ID badge. Students are not allowed to leave the building without being signed out in the office by an authorized adult. Buildings are monitored by security cameras. Each school has a full-time nurse on staff.

### Commitment to Communication

Parents are partners in our schools. Whether you choose an all-day or half-day program, you will be informed and involved throughout your child’s first school year.

### Choosing an All-day or Half-day Program

Most of our kindergarten students attend school at the Kindergarten Center in Chaska every day for one-half of the day. These sessions meet the state guidelines for 2½ hours a day. Our half-day program gives students the foundation they need to meet the academic goals for first grade. Read more about the Kindergarten Center and our half-day program on page 3.

We also offer an outstanding all-day program. Students enrolled in this program experience the same kindergarten curriculum in more depth through the year. The 6½ hour program is voluntary; parents pay \$3,600 tuition. Details about the All-day Kindergarten Program are found on page 4.

Next fall marks the beginning of a new all-day dual language immersion program at the Kindergarten Center. Students enrolling in La Academia will receive instruction in both English and Spanish beginning in Kindergarten through at least grade 5. La Academia is an all-day kindergarten choice and is located at the Kindergarten Center. Tuition is \$3,600. Anticipated hours are from 9:20 a.m. to 3:50 p.m. Learn more about La Academia on page 5.

# Welcome to Kindergarten!

## Half-day Kindergarten at the Kindergarten Center

Your child's assignment to morning or afternoon kindergarten at the Kindergarten Center depends on your child's bus pick-up and drop-off location. While there are a few exceptions, morning or afternoon assignments are determined by elementary attendance areas.

### ❖ Morning buses

Generally, students being picked-up or dropped-off in *the attendance areas of Chanhassen Elementary, Victoria Elementary, East Union Elementary and Bluff Creek Elementary* will attend the morning session of kindergarten from 8:40 to 11:10 a.m.

### ❖ Afternoon buses

Generally, students with pick-up and drop-off in *the attendance areas of Jonathan Elementary, Clover Ridge Elementary and Chaska Elementary* will attend the afternoon session from 12:40 to 3:10 p.m.

The school district reserves the right to make exceptions in order to balance class size. To find your elementary attendance area, visit our district's website at [www.district112.org](http://www.district112.org).

### Talented and Caring Staff

Few school districts in the country have a school focused on kindergartners. Staff are experts in working with the young child and will encourage and nurture your child's passion for learning.

### Special Services Available

Our teachers are specialists in working with kindergartners. Each school also has a team of teachers who have additional training in the areas of special education, speech/language, English language learners, academic challenge, adaptive physical education, social work and school psychology.

### Riding the Bus

The transportation department mails bus information in late July. The accuracy of your bus stop location depends entirely on receiving accurate information from you. Your child's bus stop will be very near your home or child care location. When our students arrive at school, we greet them as they get off the bus and then at the end of the day we escort them back to the bus. Buses bringing students to the Kindergarten Center carry only kindergarten students.

### Alternate Bus Stop

If your child has child care or will be picked up or dropped off at an address other than your home, you must complete and return the Alternate/Day Care Address Busing Request Form on page 17.



# Welcome to Kindergarten!

## All-day Kindergarten

District 112 offers an outstanding All-day Kindergarten Program. Since children develop in a variety of ways and have different rates of growth, it is important that five-year-olds who enter this program are able to be successful. The all-day, every day program is *not* child care, but rather a program that is academically stimulating, engaging, motivating and developmentally appropriate for five-year-olds.

All-day kindergarten is offered at *Bluff Creek, Chanhassen, Chaska, Jonathan and Victoria Elementary Schools and at the Kindergarten Center.*

### Tuition-based Program

Students enrolled in the all-day program experience the same kindergarten curriculum in more depth through the year. The 6½ hour program is voluntary; parents pay tuition.

The annual tuition for 2012-2013 is \$3,600. Monthly payments are due on the 1st of the month. The first payment is due July 1, 2012. Payments can be made by check or VISA/Mastercard credit/debit cards. All participants will be required to have a credit or debit card on file with the Community Education department. In the event that payment has not been made by the 15th of the month, the card account will be charged the monthly fee plus a \$10 late fee.

**Registration for enrollment in the All-day Kindergarten Program is due by 4 p.m. on February 1.** (see page 19 for details)

### Where Will My Child Attend All-day Kindergarten?

- ❖ In general, children living or attending child care in the *Bluff Creek, Chanhassen, Chaska, Jonathan or Victoria Elementary School* boundary areas attend all-day kindergarten at these schools.
- ❖ In general, children who live or attend child care in the *Clover Ridge* boundary will most likely attend all-day at the Kindergarten Center. Those in the *East Union* boundary will most likely attend all-day kindergarten at *Victoria Elementary School*.

Busing is provided to and from school based on your home or child care address. If your child will be picked up or dropped off at an address other than your home, please complete and return the Alternate/Day Care Address Busing Request form on page 17. The all-day kindergarten student's day at the elementary schools matches the schedule of grades 1 through 5 at that school.

### All-day Kindergarten Placement Process

We anticipate being able to honor each application for the All-day Kindergarten Program. However, if we receive more applications than we can accommodate, students will be placed by lottery at that school.

If the lottery is necessary, it will occur after the February 1 registration deadline with all completed applications. To be placed in the lottery for all-day kindergarten, parents must return all registration materials, plus a \$100 non-refundable deposit, to the Welcome Center by 4 p.m. on February 1.

Applications will be handled on an equal non-discriminatory basis. No preference is given to early enrollment. Names will be drawn, filling all available classrooms. All others will be placed on a numbered waiting list. All applicants for the All-day Kindergarten Program will be notified of their status in the program by late February. The \$100 deposit will be returned to families with a child placed on a waiting list. Applicants who are selected and later decide not to participate in the all-day program forfeit the \$100 deposit.





Eastern Carver County Schools now offers an all-day, dual language immersion kindergarten program. In La Academia, our regular kindergarten program will be taught in English and Spanish. La Academia is a two-way immersion program that combines students from two language groups for instruction in both of their languages. Students have the opportunity to be both first language models and second language learners beginning in kindergarten and continuing through fifth grade.

In La Academia, kindergarten instruction will begin with 90% of the core academic instruction in Spanish and 10% in English. As children progress through the grades, the percentages shift until both languages are taught 50% of the day.

A typical day in La Academia looks very similar to a traditional all-day kindergarten classroom. Students work toward the same academic standards, attend specialist classes, and go to lunch and recess. Students have access to Club Care before and after school.

### **Tuition-based Program**

La Academia covers the same curriculum and holds the same standards for success as in our traditional kindergarten program. Teachers are licensed elementary teachers proficient in Spanish and English. The 6 ½ hour program is voluntary; parents pay an annual tuition of \$3,600. The anticipated hours for La Academia are 9:20 a.m. until 3:50 p.m. and the program is located at the Kindergarten Center. Transportation will be provided at no cost to families who live or attend day care within the District's boundaries.

### **La Academia Placement Process**

Enrollment in the program's first year is limited to two sections of 25 students. We expect at least one-third of the children in each La Academia classroom will be Spanish-speaking and at least one-third of the class will be English speaking.

Before applying to La Academia, parents must attend a required information meeting at the Kindergarten Center on one of the following dates:

<b>Monday, January 16</b>	<b>6 p.m.</b>
<b>Tuesday, January 17</b>	<b>7:30 a.m.</b>
<b>Wednesday, January 18</b>	<b>1:30 p.m.</b>
<b>Thursday, January 19</b>	<b>6 p.m.</b>

All applications are due by 4 p.m. on February 1. If we receive more applications than we can accommodate, a lottery will be held for placement in La Academia. To be placed in the lottery, parents must attend one of the required informational meetings, and return all registration materials, including a \$100 non-refundable deposit, to the Welcome Center by 4 p.m. on February 1. If the lottery is necessary, it will occur after the February 1 registration deadline with all completed applications. You will be notified in late February about your child's enrollment in La Academia. The \$100 deposit will be returned to families with a child on a waiting list. Applicants who are selected and later decide not to participate forfeit the \$100 deposit.

**More information about La Academia and dual language immersion programs can be found at [www.district112.org](http://www.district112.org).**

# Welcome to Kindergarten!

## Child Care Options for Kindergarten Students

Our District provides before and after school child care for students in half-day and all-day kindergarten. Children and families enrolled in our Club Care programs enjoy many benefits including:

- A welcoming environment with friendly, caring staff
- A child-centered, developmentally appropriate learning environment
- Learning activities that align with Kindergarten curriculum
- Recreation and enrichment activities
- The convenience of being located in your child's school
- Convenient hours: 6:30 am to 6:00 pm
- Parent and family support in partnership with other school staff
- Opportunities for growth and the development of social skills
- School release day (Kidz Venture) and summer program options

**Kindergarten Center Club Care** is a program designed specifically for children who attend half-day or all-day Kindergarten at the Kindergarten Center in Chaska. Club Care staff specialize in early childhood development and care for students during the time of day they aren't in class. Curriculum for Club Care is designed to align with kindergarten classroom experiences — complementing and enhancing learning without duplication. Hot lunch is also offered as an option for students enrolled in the half-day program.

**Club Care in the elementary schools** is designed for K-5 students before and after school. During their time at Club Care, children are offered breakfast/snack and have the choice to participate in activities such as: art, science, computer lab or gym/outdoor play.

For more information and current rates, visit [www.ce4all.org](http://www.ce4all.org) or call Community Education at 952-556-6226. (Rates for the school year will be available in March 2012.)



# Welcome to Kindergarten!

## Kindergarten Registration Checklist

All of the forms for kindergarten registration are included in this booklet. This checklist is designed to help you monitor your progress in completing your child's registration.

*All of these forms and a copy of your child's birth certificate must be returned by 4 p.m. on February 1 to the District Welcome Center. A pre-addressed envelope has been included for your convenience. Extra postage is required.*

### Early Childhood Screening

If your child has been screened in another school district, please provide a copy of the screening record. If your child has not been screened, call 952-556-6224 as soon as possible to schedule an appointment. **The screening is required by state law and is free** to District 112 preschoolers and must be submitted before your child starts kindergarten.

### Birth Certificate

A photo-copy of your child's birth certificate (hospital or county seat) **must be submitted** with your child's registration.

### Student Registration Forms *pages 9-12*

Please remember to sign page 12.

### Pupil Immunization Record *page 13*

This form — or a copy of your child's immunization record — must be returned with the registration forms by February 1. Please do not wait to send this information until your child's immunizations are complete. You can send partial immunization information now and you may call, fax, mail or drop off any changes to the immunization record that occur in the summer. The fax number for the Kindergarten Center is 952-556-6409.

According to state law, students will not be allowed to start school without the required immunizations. If a parent has a conscientious objection to required immunizations, it is necessary to sign the immunization form and have it notarized.

### Student Health History *page 14*

This form helps us prepare the appropriate placement for your child and to accommodate any health needs on the first day of school. Please remember to sign the form.

### Getting to Know Your Child *page 15*

Complete this form if you have information about your child that you believe would be important to consider as we build class lists.

### Alternate and/or Day Care Address Busing Form *page 17*

Please complete only if your child is picked up or dropped off at an address other than your home address.

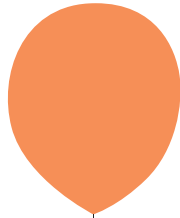
### Application for All-Day Kindergarten Programs *page 19*

All-day kindergarten is a voluntary, tuition-based program. The annual tuition for the 2012-2013 school year is \$3,600. The \$100 deposit is non-refundable but applies toward the first of 10 monthly payments of \$360. The first payment is due July 1, 2012.

### Where to Register

**Register by mail:** All registration materials go to: District 112 Welcome Center, 11 Peavey Road, Chaska, MN 55318. Office: 952-556-6112.  
**Extra postage is required.**

**Register at the Welcome Center:** You may drop off the forms at the Welcome Center if you prefer. We are open Monday through Friday, 8 a.m. to 4:00 p.m. It is not necessary to bring your child with you to register.



**Welcome to  
Kindergarten!**



**Student Registration Form  
K-12**

**SCHOOL USE ONLY**

Student ID	_____
MARSS ID	_____
Birth Verification	_____
Start Date	_____
Service Type:	Primary or Part-time
Graduation Year	_____
Resident District	_____
Entry Code	_____
School	_____

**Student Information - student's full legal name as it appears on birth certificate**

Last Name \_\_\_\_\_ First \_\_\_\_\_ Middle \_\_\_\_\_ Suffix \_\_\_\_\_

Gender \_\_\_\_\_ Date of Birth \_\_\_\_\_ Grade \_\_\_\_\_ Nickname \_\_\_\_\_

**Racial/Ethnic Background – Please complete all questions (1-3).**

- For federal reporting purposes. **Is the student Hispanic or Latino?**  Yes  No  
A person of Mexican, Puerto Rican, Cuban, Central or South American, or other Spanish culture or origin-regardless of race.
- For federal reporting purposes. What is the student's race? **Choose one or more.**
  - American Indian or Alaskan Native**-a person having origins in any of the original peoples of North America and maintain cultural identification through tribal affiliation or community recognition.
  - Asian**-a person having origins in any of the original peoples of the Far East, Southeast Asia, the Pacific Islands or the Indian subcontinent. This area includes China, India, Japan, Korea, the Philippine Islands and Samoa.
  - Black or African American**-a person having origins in any of the black racial groups of Africa.
  - Native Hawaiian or other Pacific Islander**-a person having origins in any of the original peoples of Hawaii, Guam, Samoa or other Pacific Islands.
  - White**-a person having origins in any of the original peoples of Europe, North Africa or the Middle East.
- For state reporting purposes, **please check one** that best describes the student's primary racial/ethnic background:  
 **American Indian or Alaskan Native,**  **Asian or Pacific Islander,**  **Hispanic,**  **Black,**  **White**

Student's Birth Country \_\_\_\_\_

Date Student Entered United States \_\_\_\_\_

Has the student attended school in the United States for more than 3 years?  Yes  No

**Student Enrollment Information**

**Preschool Screening** –is required for your child’s entry into public school kindergarten or first grade.

Has your child received a comprehensive health and developmental screening as a preschooler?  Yes  No  
 If Yes, screening date: \_\_\_\_\_ (3-5 years old)

If Yes, check type of Provider:  Child/Teen Checkups  Head Start  Private Provider  Another District  Conscientious Objector

If Yes, Name of Provider or District : \_\_\_\_\_

**Last School Attended** \_\_\_\_\_  
 (School Name) (City) (State)

1. Has your student ever attended a public school in Minnesota before?  Yes  No
2. If Yes, name of Minnesota School or District \_\_\_\_\_
3. Is this student participating in a Foreign Exchange Program?  Yes  No
4. If Yes, name of Foreign Exchange Program \_\_\_\_\_
5. Does this student currently receive Gifted and Talented services?  Yes  No
6. Have you recently moved to this school district within the last 36 months for temporary or seasonal agricultural or fishing work?  Yes  No
7. Is this student currently homeless (lacks a fixed, regular and adequate nighttime residence)?  Yes  No
8. Is this student a Ward of the State (parental rights have been terminated by court order)?  Yes  No  
 (Does not include foster homes)
9. Does this student currently live in District 112?  Yes  No
10. If No, what District does the student live in? \_\_\_\_\_
11. If No, has a Non-Resident Agreement been completed and sent to the Welcome Center?  Yes  No
12. Does this student currently have an IEP (Individual Education Plan)?  Yes  No

**Home Primary Language**

In order to help your child learn, your child’s teachers need to determine which language your child uses most. Please respond to the questions below by checking the appropriate box.

1. Which language did your child learn first?  English  Other: \_\_\_\_\_
2. Which language is most often spoken in your home?  English  Other: \_\_\_\_\_
3. Which language does your child usually speak?  English  Other: \_\_\_\_\_
4. Has this child ever received ELL (English Language Learner) or Bilingual services?  Yes  No

**Primary Household Information**-list family members who reside at the same address with student.

Primary Resident Address of Student \_\_\_\_\_

Mailing Address of Student - If Different From Resident Address \_\_\_\_\_

Student Home Landline Phone \_\_\_\_\_ Student Cell Phone \_\_\_\_\_

**Student Lives With:**  Both Parents  Mother  Father  Mother and Stepfather  Father and Stepmother  Foster Parents  Host Family  Other-Please Specify Relationship Below

\*\*\*\*\*

**Parent/Guardian 1 resides at the same address with student. Use full legal name as it appears on driver's license.**

1. Last Name \_\_\_\_\_ First Name \_\_\_\_\_ Middle Name \_\_\_\_\_

Gender \_\_\_\_\_ Relationship to Student \_\_\_\_\_ Legal Guardian  Yes  No

The Guardian above will have rights and access to all students' educational records and will receive information in the following manner: Mailing, Portal and Email.  Yes  No

Emergency Call Sequence \_\_\_\_\_

Cell Phone \_\_\_\_\_ Work Phone \_\_\_\_\_ Email \_\_\_\_\_

Does the student's parent/guardian need interpreter services? \_\_\_\_\_ Preferred Language \_\_\_\_\_

\*\*\*\*\*

**Parent/Guardian/Adult 2 – complete only if resides at primary address listed above. Use full legal name as it appears on driver's license**

2. Last Name \_\_\_\_\_ First Name \_\_\_\_\_ Middle Name \_\_\_\_\_

Gender \_\_\_\_\_ Relationship to Student \_\_\_\_\_ Legal Guardian  Yes  No

The Guardian above will have rights and access to all students' educational records and will receive information in the following manner: Mailing, Portal and Email.  Yes  No

Emergency Call Sequence \_\_\_\_\_

Cell Phone \_\_\_\_\_ Work Phone \_\_\_\_\_ Email \_\_\_\_\_

Does the student's parent/guardian need interpreter services? \_\_\_\_\_ Preferred Language \_\_\_\_\_

List Legal Names of other children, including pre-school age, who reside at the student's address.						
Last Name - as appears on birth certificate	First Name	Middle Name	Gender M/F	Date of Birth	Relationship to Student	Name of School Attending

Student Name \_\_\_\_\_

**Additional Parent/Guardian Information. PARENTS NOT LISTED ABOVE AND DO NOT LIVE AT THE PRIMARY ADDRESS.**  
Use parent's full legal name as it appears on driver's license. The Family Education and Privacy Rights Act provide that educational records are available to parents of a student. Legal documentation is required for custody limitations.

Does this student reside with this parent/guardian part-time during the school year?  **Yes**  **No**  
Secondary Non-Household

3. Last Name \_\_\_\_\_ First Name \_\_\_\_\_ Middle Name \_\_\_\_\_

Gender \_\_\_\_\_ Relationship to Student \_\_\_\_\_ Legal Guardian  Yes  No

The Guardian above will have rights and access to all students' educational records and will receive information in \_\_\_\_\_  Yes  No  
the following manner: Mailing, Portal and Email.

Emergency Call Sequence \_\_\_\_\_

Cell Phone \_\_\_\_\_ Work Phone \_\_\_\_\_ Email \_\_\_\_\_

Does the student's parent/guardian need interpreter services? \_\_\_\_\_ Preferred Language \_\_\_\_\_

Home Landline Phone \_\_\_\_\_

Parent/Guardian Resident Address \_\_\_\_\_

Parent/Guardian Mailing Address-If different from resident address. \_\_\_\_\_

**\*\*SIGNATURE REQUIRED\*\***

I hereby verify that the above information is true and correct to the best of my knowledge and belief.

\*\* Parent/Guardian Signature: \_\_\_\_\_ Date: \_\_\_\_\_

The data requested on the registration forms will be maintained as part of your child's educational and directory records. Some data is required (such as name, address, and birthdates). Other information requested is not required (such as emergency contacts) but will help us to serve you and your child more efficiently. The information you provide may be shared with other staff within the school district and the Minnesota Department of Education whose jobs require access or other agencies as provided by law. Student educational records are considered private under Minnesota's Data Practices Act. Student directory information is designated per the School District's Data Privacy Policy.



# Pupil Immunization Record

FOR SCHOOL USE ONLY  
 Complete; booster required in \_\_\_\_\_  
 In process; 8 mos. Expires \_\_\_\_\_  
 Medical exemption for \_\_\_\_\_  
 Conscientious objection for \_\_\_\_\_

Name \_\_\_\_\_ Birthdate \_\_\_\_\_ Student Number \_\_\_\_\_

Minnesota Statutes Section 121A.15 requires children enrolled in a Minnesota school to be immunized against certain diseases, allowing for specified exceptions. This form is designed to provide the school with information required by the law.

Enter the MONTH, DAY, and YEAR for all vaccines the pupil received. DO NOT USE (✓) or (✗).

Vaccines/doses in shaded boxes are recommended but not required by law.

Type of Vaccine	1st Dose Mo/Day/Yr	2nd Dose Mo/Day/Yr	3rd Dose Mo/Day/Yr	4th Dose Mo/Day/Yr	5th Dose Mo/Day/Yr
Diphtheria, Tetanus, and Pertussis (DTaP, DTP)					
Diphtheria and Tetanus (DT) – formulation for <7 yrs					
Tetanus and Diphtheria (Td, Tdap) – formulation for ≥7 yrs					
Polio (IPV, OPV)					
Measles, Mumps, and Rubella (MMR) (minimum age: on or after 1 <sup>st</sup> birthday)					
Hepatitis B (hep B)*					
Varicella (chickenpox)** (minimum age: on or after 1 <sup>st</sup> birthday)					
Pneumococcal Conjugate (PCV)***					
Haemophilus influenzae type b (Hib)***					
Meningococcal (MPSV, MCV)					
Human Papillomavirus (HPV)					
Hepatitis A (hep A)					
Rotavirus					

\* Hepatitis B is required for kindergarten and 7<sup>th</sup> grade.

\*\* Varicella vaccine or disease history is required for kindergarten and 7<sup>th</sup> grade.

\*\*\* PCV and Hib vaccines are recommended only for children through age 4 years.

Note for school personnel: Be sure to initial and date any new information that you add to this form after the parent/guardian submits it. Also, record combination vaccines (e.g., DTaP+Hib, Hib+HBV) in each applicable space.

Indicate immunization status and source of above information by choosing one of the following:

I certify that this student has received all immunizations required by law.

Signature of parent/guardian or physician/public clinic

Date

I certify that this student has received at least one dose of vaccine for diphtheria, tetanus, and pertussis (if age-appropriate), polio, hepatitis B (K + 7<sup>th</sup>), varicella (K + 7<sup>th</sup>), measles, mumps, and rubella and will complete his/her diphtheria, tetanus, pertussis, hepatitis B, and/or polio vaccine series within the next 8 months. The dates on which the remaining doses are to be given are:

Signature of physician/public clinic

Date

**Medical exemption:** No student is required to receive an immunization if they have a medical contraindication, history of disease, or laboratory evidence of immunity. For a student to receive a medical exemption, a physician must sign this statement:  
 I certify the immunization(s) listed below are contraindicated for medical reasons, laboratory evidence of immunity, or that adequate immunity exists due to a history of disease that was laboratory confirmed. (For varicella disease see \*\* below)

Exempted immunization(s): \_\_\_\_\_

Signature of physician/nurse practitioner/physician assistant \_\_\_\_\_

\*\*History of varicella disease only. In the case of varicella disease, it was medically diagnosed or adequately described to me by the parent to indicate past varicella infection in \_\_\_\_\_ Year

Signature of physician/nurse practitioner/physician assistant \_\_\_\_\_

**Conscientious exemption:** No student is required to have an immunization which is contrary to the conscientiously held beliefs of his/her parent or guardian. However, not following vaccine recommendations may endanger the health or life of the student or others they come in contact with. To receive this exemption, a parent or legal guardian must complete and sign the following statement and have it notarized:

I certify by notarization that immunization for my child is contrary to my conscientiously held beliefs. Indicate vaccine(s): \_\_\_\_\_

Signature of parent or legal guardian \_\_\_\_\_

Subscribed and sworn to before me this \_\_\_\_\_ day of \_\_\_\_\_ 20\_\_\_\_

Signature of notary \_\_\_\_\_

**Additional exemptions**

**Children less than 7 years of age:** The 5<sup>th</sup> dose of DTaP/DTp/DT (similarly, the 4<sup>th</sup> dose of polio vaccine) is not necessary if the 4<sup>th</sup> DTaP/DTp/DT (3<sup>rd</sup> dose of polio) was administered after the 4<sup>th</sup> birthday.

**Children 7 years of age and older:** A history of 3 doses of DTaP/DTp/DT/Td/Tdap and 3 doses of polio vaccine meets the minimum requirements of the law.

**Students in grades 7-12:** A Td or Tdap booster at age 11 years or later is not required for students in grades 7-12 whose most recent Td was given after their 7<sup>th</sup> birthday but before their 11<sup>th</sup> birthday. Instead, it will be required 10 years after the date of the most recent dose.

**Students 11-15 years of age:** A 3<sup>rd</sup> dose of hepatitis B vaccine is not required for those students who provide documentation of the alternative 2-dose schedule.

**Students 10 years or older:** May receive Tdap to fulfill the Td requirement for students in grades 7-12.

**Students 18 years of age or older:** Do not need polio vaccine.

Immunization Program  
 P.O. Box 64975  
 St. Paul, MN 55164-0975  
 651-201-5503 or 1-800-657-3970  
 www.health.state.mn.us/immunize  
 (4/2010) IC#140-0155

# Student Health Information

Student Name \_\_\_\_\_ Date of Birth \_\_\_\_\_ Grade \_\_\_\_\_

To insure the health and safety of your child this information may be shared with school district staff or emergency personnel.

Health Concerns	Yes	No	Medication (Name, dosage)	Necessary Monitoring in School	Comments or Describe
Asthma/ Respiratory					
Severe Allergies				Food Latex Insects	Type of reaction:  Date of Last reaction:
Diabetes					
Head Injury					
Seizures/ Neurological					Type and date of last episode
Heart/ Blood					
Muscles/Bones/ Joint/Skin					
Bladder/Kidney					
Stomach/ Intestine/Bowels					
Immune Problems					
Emotional/ Behavioral					
Hearing Concerns				Hearing Aide? Preferential seating?	
Vision Concerns				Glasses or Contacts? Reading Only?	
Growth/Nutrition Concerns					
Developmental Concerns					
Other Health Concerns					

If your child becomes ill or injured, the school will attempt to call the parent/guardian at home or at work. If you cannot be reached, the school will attempt to call the emergency contact. In case of serious accident/injury/illness, 911 will be called if necessary.

Signature: \_\_\_\_\_ Date: \_\_\_\_\_

# Getting to Know Your Child

Student Name \_\_\_\_\_

If you have information about your child that you believe would be important to consider as we build our class lists, please share that information with us. We consider a number of important factors such as academic achievement, emotional/social combinations, teaching styles and special needs of the student. While your input is valued, please understand that many factors need to be considered as we form our classes.

*I'd like you to know the following about my child:*

---

---

---

---

---

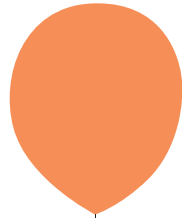
---

---

---

---

---



**Welcome to  
Kindergarten!**

# Alternate and/or Day Care Address Busing Request

To be completed annually or when busing information changes for the student  
Return this form to your child's school.

**Student is in grade K and needs busing to or from an address other than the home address**

Student Name: \_\_\_\_\_ Grade: K Student ID: \_\_\_\_\_  
(School use only)

**Alternate Busing Address Registration**

To be completed for Kindergarten students requiring busing to or from an address other than their home address

**To School Trip:** (student is to walk to closest established bus stop) Start Date: \_\_\_\_\_

Address: \_\_\_\_\_ City: \_\_\_\_\_

Check days that apply:  M  T  W  TH  F  EVERYDAY

Contact person for this address: \_\_\_\_\_ Phone: \_\_\_\_\_

**From School Trip:** (student is to walk from closest established bus stop) Start Date: \_\_\_\_\_

Address: \_\_\_\_\_ City: \_\_\_\_\_

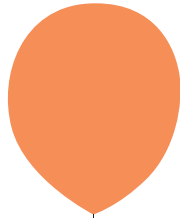
Check days that apply:  M  T  W  TH  F  EVERYDAY

Contact person for this address: \_\_\_\_\_ Phone: \_\_\_\_\_

It is the parents' responsibility to transport the student to and from the requested school or bus stop.

Parent/Guardian Name (print) \_\_\_\_\_

Parent/Guardian Signature: \_\_\_\_\_



**Welcome to  
Kindergarten!**

# Application for All-day Kindergarten Programs 2012-2013

This completed application, along with a non-refundable \$100 deposit payable to *Community Education*, and all registration materials must be received by 4 p.m. on **February 1, 2012**.

Please send or deliver registration materials to:

**Welcome Center, 11 Peavey Road, Chaska, MN 55318.**

For information about the kindergarten programs, call the Kindergarten Center at **952-556-6400**.

Please call the Welcome Center with questions about the registration process at **952-556-6112**.

<b>School Use Only:</b> Student ID _____ School Assignment _____
Based on Home Address <input type="checkbox"/> Daycare Address <input type="checkbox"/> Non-Resident/OE <input type="checkbox"/> Other _____
Date Rec'd _____ Dollar Amount _____ Cash <input type="checkbox"/> Check # _____ Scholarship Amount _____

## SECTION 1 – Contact Information

Child's Name \_\_\_\_\_  Male  Female

Date of Birth \_\_\_\_\_

Billing Name \_\_\_\_\_

Billing Address \_\_\_\_\_

## SECTION 2 – Program Choice

**My child is applying for the following all-day kindergarten program:**

**All-Day Kindergarten** *(Please circle attendance area in Section 3)*

**La Academia All-Day Kindergarten**

*(Note: Space is limited in this program. Parents must attend an information meeting for acceptance into La Academia. The meetings will be held at the Kindergarten Center on January 16 at 6 pm, January 17 at 7:30 am, January 18 at 1:30 pm or January 19 at 6 pm.)*

Please indicate which statement applies to your child:

My child speaks and understands English.

My child speaks and understands Spanish.

My child speaks and understands both English and Spanish.

If a lottery is necessary for La Academia, the preferred second choice for my child is:

All-day Kindergarten *(Please circle attendance area in Section 3)*

Half-day Kindergarten

*Continued on back*

**SECTION 3 – Attendance Areas**

**All-Day Kindergarten:**

In general, children living or attending child care in the Bluff Creek, Chanhassen, Chaska, Jonathan or Victoria Elementary School boundary areas will attend all-day kindergarten at these schools.

*\*Children who live or attend child care in the Clover Ridge boundary will most likely attend all-day at the Kindergarten Center and those in the East Union boundary will most likely attend all-day kindergarten at Victoria Elementary School.*

**Please circle the elementary boundary area in which your child lives or attends day care.**

To find elementary boundary go online to [www.district112.org](http://www.district112.org) under Quick Links/Find a School/Location Finder.

Bluff Creek	Chanhassen	Jonathan	Victoria
Chaska	*Clover Ridge	*East Union	

**La Academia Kindergarten:**

La Academia is located at the Kindergarten Center. Transportation will be provided for all students, regardless of where they live or attend day care within the District boundaries.

---

**SECTION 4 – Important Information**

Please answer the following questions for enrollment in the All-Day Kindergarten or La Academia programs:

1. Does your child have any special needs? If so, in what area(s)?

---

2. Does your family speak another language at home other than English?  
If so, what language?

---

3. Do you wish to receive information about scholarship funds to help cover tuition?

Yes    No

*\*Note: In order to qualify for scholarship funds, you must complete the Application for Educational Benefits form. The form is available online at [www.district112.org](http://www.district112.org) or from the Welcome Center.*





Welcome Center  
11 Peavey Road  
Chaska, Minnesota 55318

Presorted  
First-Class Mail  
U.S. Postage  
**PAID**  
Twin Cities, MN  
Permit #32674

# It's time to register for Kindergarten



**Kindergarten registration forms  
are due back by 4 p.m. on February 1, 2012**

If your child will not be attending kindergarten in District 112 next fall, please call us at 952.556.6112. Thank you!

Si quiere esta informacion e espaho, por favor llame al 612.282.4867.

[www.district112.org](http://www.district112.org)



Follow us on Facebook!