

Return to Learn Update

August 18, 2020
Elementary Information Session





Decision Making

Stakeholder Feedback

- Family survey (4750 responses)
- Teacher listening sessions (800 teachers)
- HR Staff Survey (staffing levels)

Data Informed Decisions

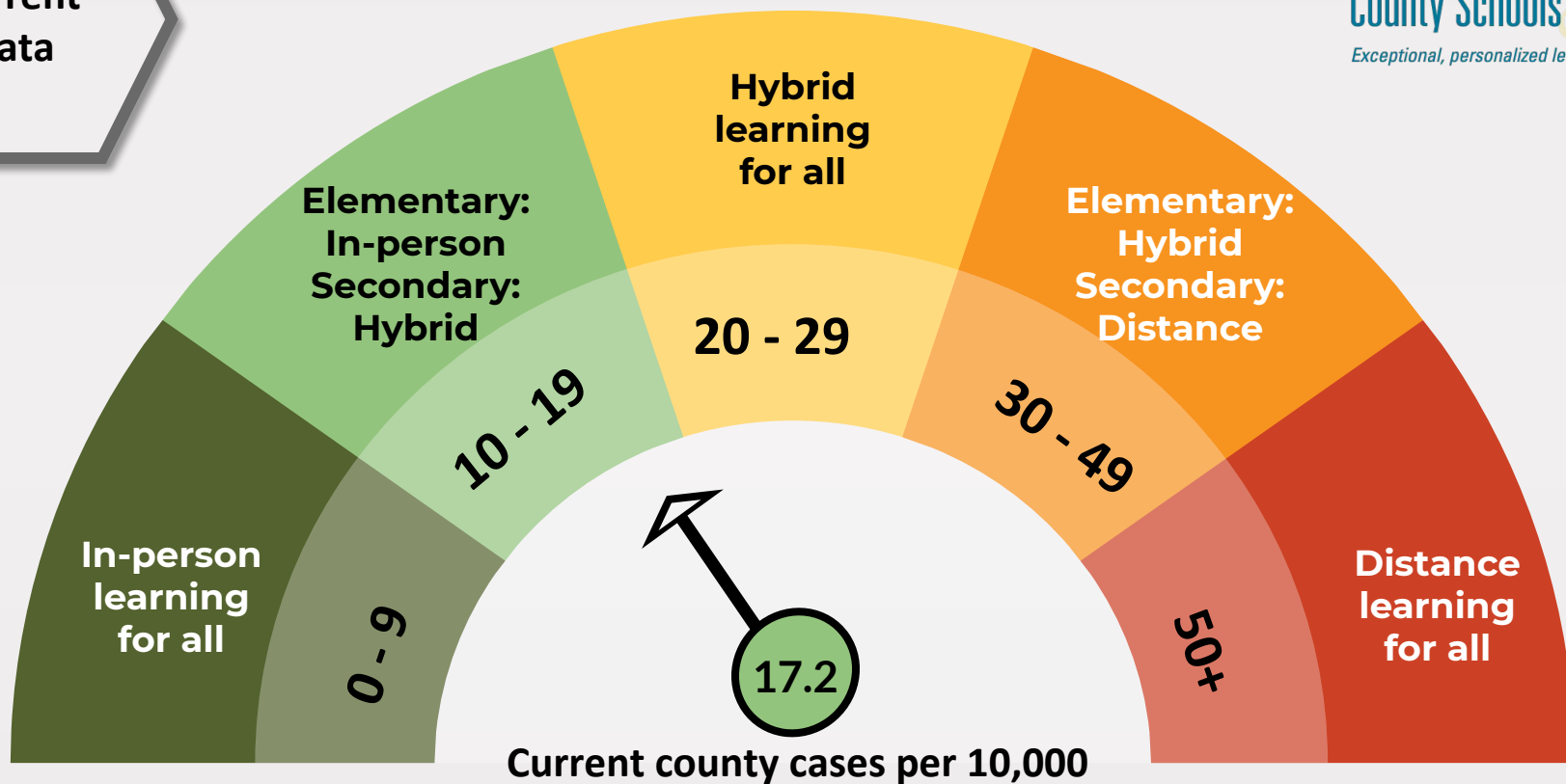
State Guidance

- Consultation with MDE and MDH
- Collaboration with other district superintendents

Public Health Data

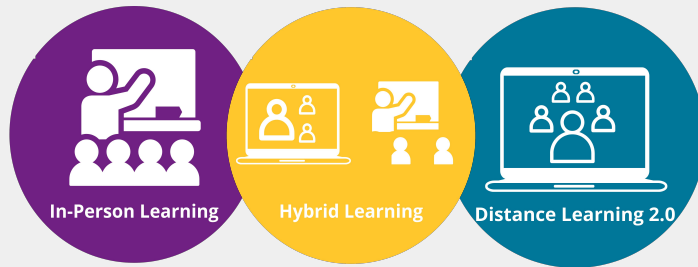
- Consultation with local community officials
- Consultation with county health officials

**Current
Data**



Hybrid Highlights

Modified Hybrid



ECCS will prioritize maximum in-person learning for our youngest learners with our K-5 students in-person 4 days per week

Elementary Schedule

Modified Hybrid (In-Person)



MONDAY
In-person

TUESDAY
In-person

WEDNESDAY
Distance
Learning

THURSDAY
In-person

FRIDAY
In-person

In-Person Health & Safety



Enhancements to
buildings including
increased air flow and
hand sanitizer stations

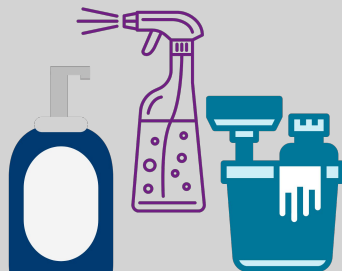


In-Person Learning

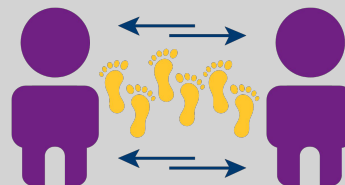
Students will attend
school every day



Additional precautions
including wearing face
coverings

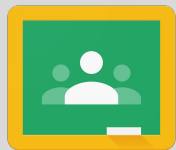


Schools and buses will
receive extra cleaning and
disinfecting



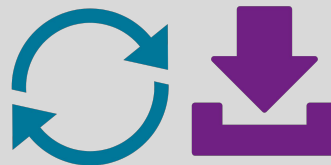
Social distancing, where
possible, class sizes will
remain as funded

ECCS Online Learning Academy

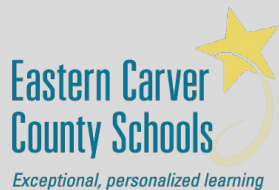


Google Classroom

Google Classroom will be our learning platform allowing curriculum and learning in a variety of ways



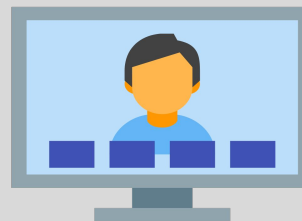
Balance of synchronous and asynchronous lessons



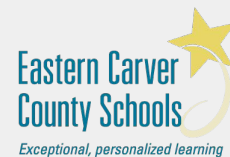
Classes will be taught by District 112 teachers



All teachers will build strong relationships and create a sense of belonging in distance learning communities with their students



Teachers will host daily virtual check-ins to build relationships and provide academic support

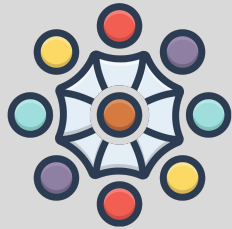


Commit through January 22 - end of secondary first semester

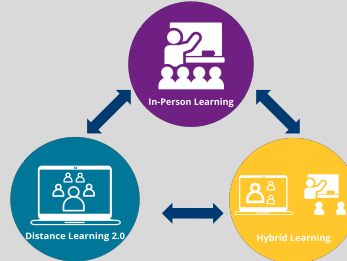


Specialized Education Services

Free appropriate public education (FAPE) will be offered and provided within all educational models. Students on IEPs or Section 504 Plans will receive equal access to education as their nondisabled peers.



IEP Teams will determine the appropriate services, related services and modifications for each student. Students will engage in learning as specified within their grade-level educational model, unless determined by their IEP team.



Each student on an IEP will have an individual COVID-19 Contingency Learning Plan (CLP) created that articulates services in all models to support smooth transitions if/when the district pivots between models.

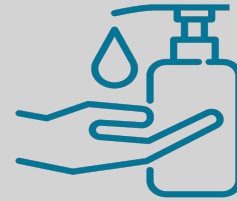


504 teams members will review each student plan to ensure Section 504 Plans are appropriate and provided

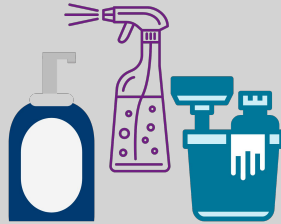
Building Health & Safety



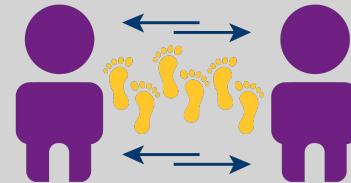
Additional precautions including wearing face coverings for all staff and students



Enhancements to buildings including increased air flow and hand sanitizer stations



Touchpoint cleaning throughout day with nightly disinfecting. Wednesdays used for deep cleaning. Cleaning kits for each school will be provided and fogging machines available if needed.



Signage in hallways, restrooms, and entrances, along with plexiglass portable and permanent barriers

Transportation

Need for adjusted bell times earlier or later to maximize current route fleet and driver supply, and provide extra time at schools for staggered loading and unloading procedures, additional parent traffic issues, and bus cleaning procedures

<u>School</u>	<u>Start and Dismissal Times</u>
Bluff Creek Elementary	8:30 a.m. - 3:00 p.m.
Carver Elementary	7:45 a.m. - 2:15 p.m.
Chanhassen Elementary	7:45 a.m. - 2:15 p.m.
Clover Ridge Elementary	7:45 a.m. - 2:15 p.m.
East Union Elementary	9:35 a.m. - 4:05 p.m.
Jonathan Elementary	8:30 a.m. - 3:00 p.m.
La Academia/Kinder Acad.	9:35 a.m. - 4:05 p.m.
Victoria Elementary	9:35 a.m. - 4:05 p.m.

<u>School</u>	<u>Start and Dismissal Times</u>
Chaska Middle School East	8:40 a.m. - 3:30 p.m.
Chaska Middle School West	8:40 a.m. - 3:30 p.m.
Pioneer Ridge Middle School	8:40 a.m. - 3:30 p.m.
Chanhassen High School	7:45 a.m. - 2:35 p.m.
Chaska High School	7:45 a.m. - 2:35 p.m.
IAA	7:50 a.m. - 2:28 p.m.
STAR	7:40 a.m. - 2:15 p.m.

Adjusted to earlier start

Adjusted to later start

Nutrition Services

Multiple ways to access meals depending on grade level and learning model choice. When students are in the school building, they will visit cafeterias as they have in previous years but with extra safety and physical distancing measures in place.

Plexiglass barriers in serving lines and points of sale | All staff wear masks and gloves |
Contactless student purchases | Single serve items only | Prep kitchens marked with distancing markers



In-Person Learning

Food served from school kitchens with physical distancing. Eat in cafeteria or in classrooms.

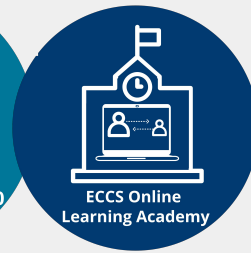


Hybrid Learning

Breakfast & Lunch Meal Kits
One or three days meal kits for students to be consumed on their distance learning days. Take home, pick up and delivery options.



Distance Learning 2.0



ECCS Online
Learning Academy

Breakfast & Lunch Meal Kits
Five day meal kits can be ordered and picked up from schools as well as daily meal pick up from Chanhassen HS. Delivery option if pick up is a barrier.

Tier 1 Child Care DL day

- Child care will be offered at no cost to Tier 1 workers on Wednesday/distance learning day (during school hours)
- Child care offered in each elementary building with registration limited by staff and space. We are exploring community partnerships for additional spaces.

Registrations for Tier 1 child care on Wednesday will be accepted - *as space and staffing allows* -- in the following order:

1. District staff whose children attend ECCS
2. Currently-enrolled fall Tier 1 Club Care
3. Other Tier 1 families with K-5 children needing care
4. Currently-enrolled fall Club Care families (who are not Tier 1)

Tier 1 Essential Workers include:

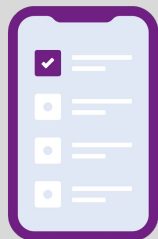
- Healthcare and public health
- Law enforcement, public safety and first responders
- Food and agriculture
- Judicial Branch
- National Guard
- Educators and school staff providing in-person instruction or caring for children of critical workers
- Child care and school-age care providers

Modified Hybrid Child Care

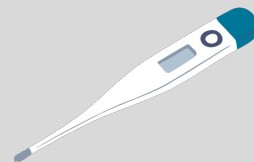
- Offered at no cost to Tier 1 workers on Wednesday/distance learning day (during school hours)
- Child care will be provided in each elementary building: registration limited by staff and space
- Currently-enrolled Club Care families have received information on how to confirm fall schedule for before and after school care

	Monday	Tuesday	Wednesday	Thursday	Friday
Childcare in a Modified Hybrid Model	Club Care Before School	Club Care Before School	Club Care Full Day Care	Club Care Before School	Club Care Before School
	In Person School Day	In Person School Day	Distance Learning Day for all K-5 Students Tier 1 District Care during regular school hours	In Person School Day	In Person School Day
	Club Care After School	Club Care After School	Club Care Full Day Care	Club Care After School	Club Care After School

Health Monitoring



Educate staff, students, and families about the signs and symptoms of COVID-19



Families will be asked to check students for signs of illness before sending them to school



Students and staff should stay home when ill



Students who develop symptoms at school will be isolated in a designated space until they can be picked up

COVID Cases

How will we handle COVID cases in our schools?

Positive Test (Staff/ Student)

Notify building
specific Health
Office

Nurse contacts
Carver County
Public Health and
Tara Cliff

Custodians notified
for extra cleaning
protocol

Human Resources
notified for staff
COVID-related
absences

Carver County Public
Health or MDH case
investigation on all
positive cases

Public Health/MDH will
notify school district of
any identifications
through investigation

Notifications
sent per
public health
recommendation

Positive cases stay home to
isolate for 10 days from
onset of symptoms,
improved symptoms and
fever free for 24 hours
without medication
Infinite Campus used for
documentation of dates

Positive or suspected positive cases may result in quarantine of a classroom, a cluster, or a building, depending on recommendations from Public Health.

COVID Cases

How will we handle COVID cases in our schools?

Symptomatic Case (Staff/Student)

Notify building specific Health Office

[List of Symptoms](#)

Isolate ill person from well people, and don surgical mask

Custodians notified for extra cleaning protocol

Human Resources notified for staff COVID-related absences

Case investigation through building nurse in collaboration with Carver County Public Health

Recommend testing and/or follow up with healthcare provider

If case is determined to be positive, follow positive case flow

Notifications may be sent per public health recommendation

Symptomatic person stays home to isolate for 10 days from onset of symptoms, improved symptoms and fever free for 24 hours without medication

Infinite Campus used for documentation of dates

COVID Cases

How will we handle COVID cases in our schools?

Contact of a positive or symptomatic case (Staff/Student)

Notify building specific Health Office

Contacts are determined through case investigation either by building nurse and/or public health
Recommend testing if close contact (within 6ft for >15 min)

Notifications sent per public health recommendation

Person needs to stay home (quarantine) for 14 days to watch for symptoms*, even if they test negative

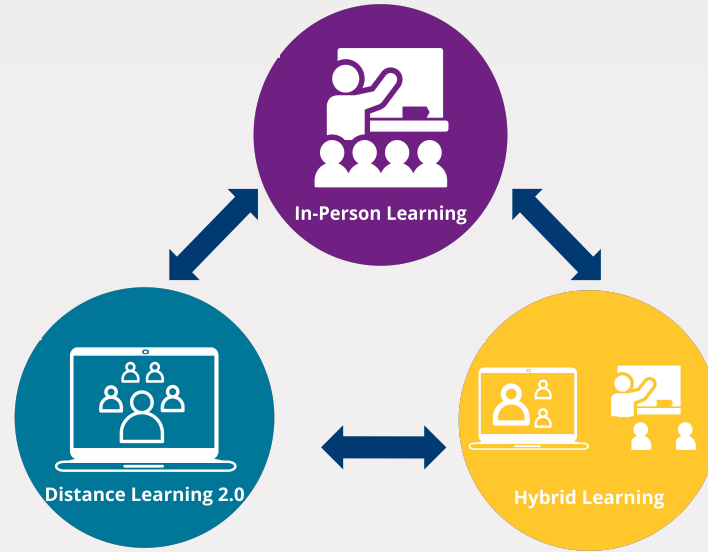
If symptoms develop, follow the symptomatic case flow
Contact building nurse if positive test

*If a person in the household is positive or symptomatic and are unable to isolate in the home, quarantine begins 14 days after the last day of contact or when isolation ends. (10 days symptomatic plus 14 days quarantine).

Additional resources: <https://www.health.state.mn.us/diseases/coronavirus/waiting.pdf> | <https://www.health.state.mn.us/diseases/coronavirus/contact.pdf>

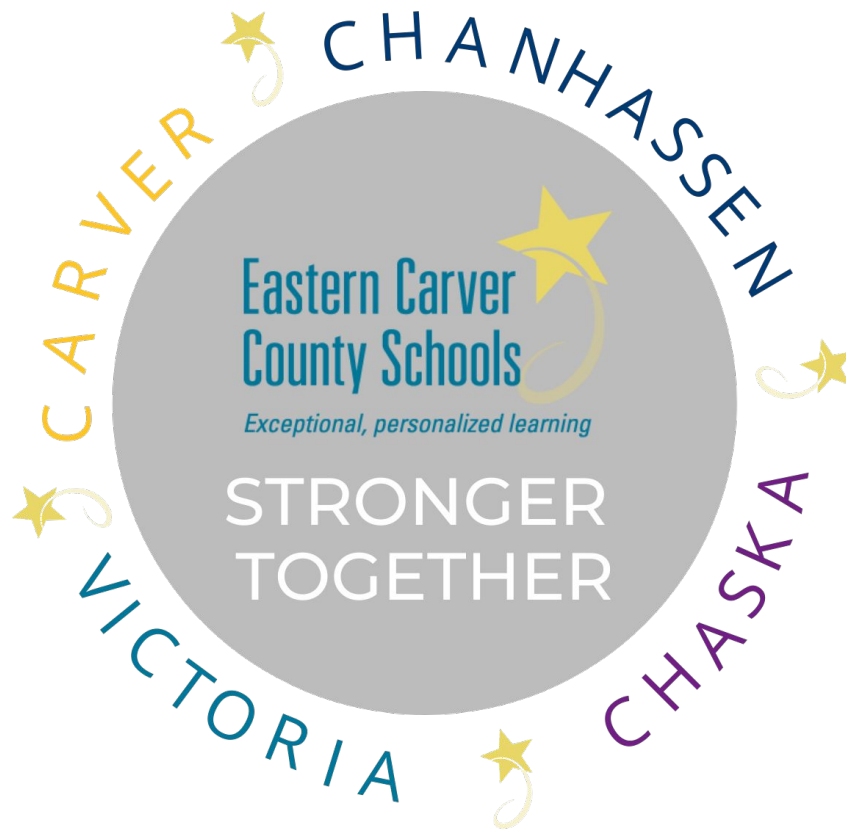
<https://www.health.state.mn.us/diseases/coronavirus/schools/exguide.pdf>

Transition Between Models



Factors that will be considered: impact of school community, staffing, trace and isolation, testing capacity and extracurricular activities.

**Community
Support**



Questions?

